



2017 TECHNICAL SERVICE MANUAL

TABLE OF CONTENTS TECHNICAL SERVICE 2017

PAGE 3: 2017 REYNOLDS WHEEL GRAPHICS

PAGES 4 – 7: 2017 ROAD RZR AND ELEMENT CARBON

PAGES 8 – 10: 2017 ROAD AERO CARBON RIM BRAKE

PAGES 11- 13: 2017 ROAD AERO CARBON DISC BRAKE

PAGES 14 – 18: 2017 ALLROADS RIM BRAKE CARBON

PAGES 19 - 23: 2017 ALLROADS DISC BRAKE CARBON

PAGES 24 - 40: 2017 MTN BLACK LABEL

REYNOLDS WHEEL GRAPHICS 2017



RZR



AERO



ALLROADS RIM BRAKE



ALLROADS DISC



BLACKLABEL MTN



ELEMENT

2017 REYNOLDS RZR CARBON ROAD WHEELS



RZR 46



RZR 92

PLEASE NOTE:
11 SPEED UPGRADE KIT NOT AVAILABLE FOR
10 SPEED RZR REAR WHEELS. CONTACT
REYNOLDS FOR 11 SPEED CASSETTE OPTIONS.

WARNING: The information contained herein is proprietary and confidential to Reynolds Cycling and Reynolds Cycling affiliates. This document is not intended for public distribution or disclosure. This document may be referenced and reproduced for and by Reynolds Cycling and Reynolds Cycling affiliates only.

2017 RZR TUBULAR: 46T & 92T FULL CARBON ROAD

PART NO.	WHEEL DESCRIPTION	PART NO.	HUB COMPONENTS	QTY.
74001	WS, RZR 46T SHIMANO 11SPD 16/20H	FRONT HUB RZR		
73003	W, RZR 46T FRONT 16H	20173	BEARING, 6802, ABEC 5, 2RU	2
74004	W, RZR 46T SHIMANO 11SPD 20H	20197	WASHER, STAINLESS .015" TH RZR	11
		20737	SPACER, GREASE, RZR	2
73002	WS, RZR 46T CAMPY 11SPD 16/20H	20739	END CAP, FRONT, RZR	2
73003	W, RZR 46T FRONT 16H	20782	WASHER, SS THRUST (.003), RZR	2
73005	W, RZR 46T CAMPY 11SPD 20H	20866	AXLE, RZR FRONT ALUMINUM	1
74021	WS, RZR 92T SHIMANO 11SPD 16/20H	REAR HUB RZR SHIMANO 11		
73023	W, RZR 92T FRONT 16H	20173	BEARING, 6802, ABEC 5, 2RU	4
74024	W, RZR 92T SHIMANO 11SPD 20H	20197	WASHER, STAINLESS .015" TH RZR	7
		20737	SPACER, GREASE, RZR	1
73002	WS, RZR 92T CAMPY 11SPD 16/20H	20740	END CAP, REAR N-DRIVE SIDE, RZR	1
73023	W, RZR 92T FRONT 16H	20782	WASHER, SS THRUST (.003), RZR	1
73022	W, RZR 92T CAMPY 11SPD 20H	20785	END CAP, REAR DRIVE SIDE, RZR	1
		20868	AXLE, RZR CAMPY ALUMINUM	1
		20709	FREEHUB, SHIM RZR 11 SP	1
RZR ACCESSORIES		REAR HUB RZR CAMPY 11		
20898	SKEWER, RZR REAR	20173	BEARING, 6802, ABEC 5, 2RU	4
20899	SKEWER, RZR FRONT	20197	WASHER, STAINLESS .015" TH RZR	10
20797	BRAKE PAD, CRYO BL PWR SHIM 2PK	20737	SPACER, GREASE, RZR	1
20798	BRAKE PAD, CRYO BLU PWR CAMPY	20740	END CAP, REAR N-DRIVE SIDE, RZR	1
85112	WHEEL BAG SINGLE, REYNOLDS	20782	WASHER, SS THRUST (.003), RZR	1
20647	VALVE EXTENDER, 50MM STEM	20784	SPACER, AXLE CASS. CAMPY RZR	1
20912	VALVE HOLE PLUG, RZR 92T	20785	END CAP, REAR DRIVE SIDE, RZR	1
		20933	SPACER, DRIVE SIDE 0.1", RZR	1
		20868	AXLE, RZR CAMPY ALUMINUM	1
		20710	FREEHUB, CAMPY RZR 11 SP	1


RZR 46T

RZR 92T

2017 REYNOLDS ELEMENT DISC WHEELS

PART NO.	WHEEL DESCRIPTION
73601	W, ELEMENT TUBULAR DISC SHIMANO/SRAM 11SPD
73602	W, ELEMENT TUBULAR DISC CAMPAGNOLO 11SPD
73603	W, ELEMENT CLINCHER DISC SHIMANO/SRAM 11SPD
73604	W, ELEMENT CLINCHER DISC CAMPAGNOLO 11SPD

PART NO.	HUB COMPONENTS AND ACCESSORIES	QTY
21156	FREEHUB, ELEMENT DISC 9/10/11 SHIMANO	
20328	FREEHUB, ELEMENT DISC 9/10/11 CAMPY	
20647	VALVE EXTENDER, 50MM STEM	
21160	RIM STRIP, 18MM BLUE	
20816	SKEWER, FRONT UPPER LEVEL AERO	
20817	SKEWER, REAR UPPER LEVEL AERO	
20797	BRAKE PAD,CRYO BL PWR SHIM (2PK)	
20798	BRAKE PAD,CRYO BLU PWR CAMPY (2PK)	
20156	BEARING, 6902RS REAR HUB	4
85112	WHEEL BAG SINGLE, REYNOLDS	

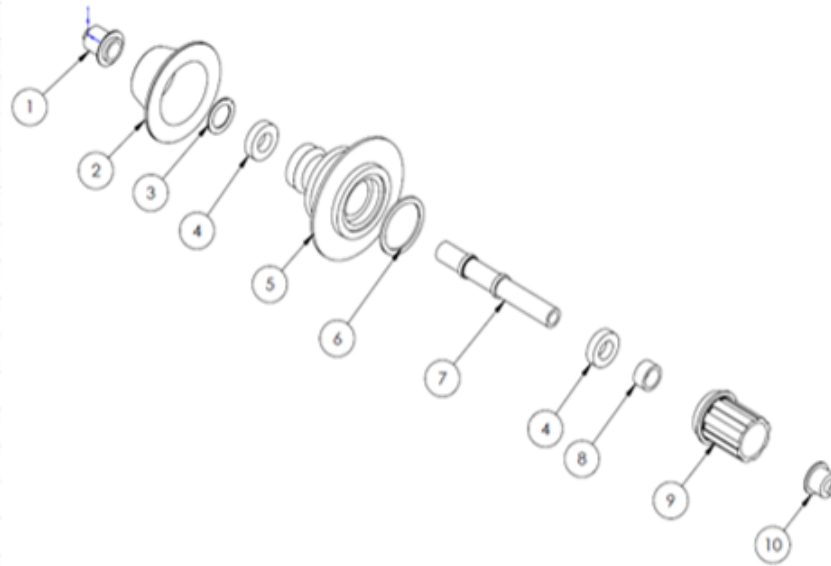


ELEMENT CLINCHER AND TUBULAR

PLEASE NOTE:
**11 SPEED UPGRADE KIT NOT AVAILABLE FOR
10 SPEED ELEMENT REAR WHEELS. CONTACT
REYNOLDS FOR 11 SPEED CASSETTE
OPTIONS.**

2017 ELEMENT CARBON DISC REAR HUB

Element Disc Hub



Item	Description	QTY	Shimano	Campy
			Part No.	Part No.
1	End Cap (NDS)	1	-	-
2	Screw Off Shell	1	-	-
3	Seal	1	-	-
4	Bearing (6902RU)	2	20156	20156
5	Hub Shell	1	-	-
6	Rubber Seal	1	21156*	20328*
7	Axle	1	-	-
8	Spacer**	1	21156*	20328*
9	Freehub Body (Shimano)	1	21156*	20328*
10	End Cap (DS)	1	21156*	20328*

*Freehub Body Kit includes: Freehub Body (9), Spacer (8), DS End Cap (10), and Rubber Seal (6).

**Shimano Spacer = 10mm thick.
Campy Spacer = 4mm thick.

Hub Options		End Caps (DS only available in Freehub Kit)*	
Part No.	Description	Part No.	Description
20342	HUB, CHOSEN DISC SHIMANO 10SP	21156	FREEHUB, DISC 9/10/11 SHIMANO
20343	HUB, CHOSEN DISC SHIMANO 11SP	20328	FREEHUB, DISC 9/10/11 CAMPY
20326	HUB, CHOSEN DISC CAMPY 10SP		
20327	HUB, CHOSEN DISC CAMPY 11SP		

WARNING: The information contained herein is proprietary and confidential to Reynolds Cycling and Reynolds Cycling affiliates. This document is not intended for public distribution or disclosure. This document may be referenced and reproduced for and by Reynolds Cycling and Reynolds Cycling affiliates only.

2017 REYNOLDS AERO CLINCHER ROAD WHEELS



AERO 65



AERO 80

2017 AERO 65 CLINCHER RIM BRAKE AERO ROAD

77681 WS, 65AERO C TL RB SHIM 18/24

77683	W, 65AERO C TL RB FRONT 18H	1
67683	D RIM, H ₂ O AERO 65 C TL RB 18H	1
20915	RIM TAPE, TL 22MM 5.5M	1
21862	HUB, LS9F RB SP FRNT QR 18H	1
21575	SPOKE, SPM CXRAY 260MM SP BLK	18
20911	NIPPLE, HEX HIDDEN INTERNAL	18
85585	W ACC KIT, 65 AERO TL RB FRNT	1
85112	WHEEL BAG SINGLE, REYNOLDS	1
20333	REYNOLDS NEW PROD WEBSITE CARD	1
21786	VALVE STEM, TUBELESS 85MM LONG	1
20816	SKEWER, QR FRONT UPPER LEVEL	1
21880	BRAKE PAD, CRYO PWR SHIM (PAIR)	1
77684	W, 65AERO C TL RB SHIM 24H	1
67684	D RIM, H ₂ O AERO 65 C TL RB 24H	1
20915	RIM TAPE, TL 22MM 5.5M	1
21863	HUB, AERO RB SP SHIM 24H	1
21576	SPOKE, SPM CX-RAY 267MM SP BLK	12
21584	SPOKE, SPM CX-RAY 265MM SP BLK	12
20911	NIPPLE, HEX HIDDEN INTERNAL	24
85586	W ACC KIT, 65 AERO TL RB REAR	1
20333	REYNOLDS NEW PROD WEBSITE CARD	1
21786	VALVE STEM, TUBELESS 85MM LONG	1
20817	SKEWER, QR REAR UPPER LEVEL	1
21880	BRAKE PAD, CRYO PWR SHIM (PAIR)	1
85112	WHEEL BAG SINGLE, REYNOLDS	1



FREEHUB OPTIONS

- 21857 FREEHUB, AERO RB/DB XD 11 SPD
- 21858 FREEHUB, AERO RB/DB CAMPY 11 SPD



WARNING: The information contained herein is proprietary and confidential to Reynolds Cycling and Reynolds Cycling affiliates. This document is not intended for public distribution or disclosure. This document may be referenced and reproduced for and by Reynolds Cycling and Reynolds Cycling affiliates only.

2017 AERO 80 CLINCHER RIM BRAKE AERO ROAD

77851	WS, 80AERO C TL RB SHIM 18/24	
77853	W, 80AERO C TL RB FRONT 18H	1
67853	D RIM, H ₂ O AERO 80 C TL RB 18H	1
20915	RIM TAPE, TL 22MM 5.5M	1
21862	HUB, FRONT AERO RB SP 18H	1
21582	SPOKE, SPM CX-RAY 246MM SP BLK	18
20911	NIPPLE, HEX HIDDEN INTERNAL	18
85587	W ACC KIT, 80 AERO TL RB FRNT	1
85112	WHEEL BAG SINGLE, REYNOLDS	1
20333	REYNOLDS NEW PROD WEBSITE CARD	1
21787	VALVE STEM,TUBELESS 100MM LONG	1
20816	SKEWER, QR FRONT UPPER LEVEL	1
21880	BRAKE PAD, CRYO PWR SHIM (PAIR)	1
77854	W, 80AERO C TL RB SHIM 24H	1
67854	D RIM, H ₂ O AERO 80 C TL RB 24H	1
20915	RIM TAPE, TL 22MM 5.5M	1
21863	HUB, AERO RB SHIM SP 24H	1
21583	SPOKE, SPM CX-RAY 253MM SP BLK	12
21588	SPOKE, SPM CXRAY 258MM SP BLK	12
20911	NIPPLE, HEX HIDDEN INTERNAL	24
85588	W ACC KIT, 80 AERO TL RB REAR	1
20333	REYNOLDS NEW PROD WEBSITE CARD	1
21787	VALVE STEM,TUBELESS 100MM LONG	1
20817	SKEWER, QR REAR UPPER LEVEL	1
21880	BRAKE PAD, CRYO PWR SHIM (PAIR)	1
85112	WHEEL BAG SINGLE, REYNOLDS	1



FREEHUB OPTIONS

- 21857 FREEHUB, AERO RB/DB XD 11 SPD
- 21858 FREEHUB, AERO RB/DB CAMPY 11 SPD



2017 REYNOLDS AERO ROAD DISC WHEELS



**AERO 46
DISC**

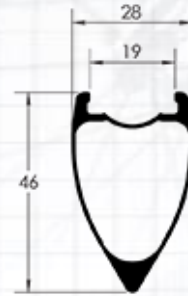


**AERO 65
DISC**

2017 AERO 46 CLINCHER ROAD DISC

77341 WS, 46 AERO C TL DB SHIM 20/24

77343	W, 46 AERO C TL DB FRONT 20H	1
67343	D RIM, H ₂ O AERO 46 C TL DB 20H	1
20915	RIM TAPE, TL 22MM 5.5M	1
21860	HUB, AERO DB CL 12MM FRONT 20H	1
21533	SPOKE, SPM CX-RAY 290MM SP BLK	20
20911	NIPPLE, HEX HIDDEN INTERNAL	20
85581	W ACC KIT, 46 AERO TL DB FRNT	1
85112	WHEEL BAG SINGLE, REYNOLDS	1
20333	REYNOLDS NEW PROD WEBSITE CARD	1
21013	VALVE STEM, TUBELESS 75MM LONG	1
21287	LOCK RING, CENTER LOCK	1
21289	ADAPTER, CL TO IS6-BOLT	1
21869	END CAP, AERO DB FRT TA 15x100	1
77344	W, 46 AERO C TL DB SHIM 24H	1
67344	D RIM, H ₂ O AERO 46 C TL DB 24H	1
20915	RIM TAPE, TL 22MM 5.5M	1
21861	HUB, AERO DB CL 142/12 SHIM 24H	1
21605	SPOKE, SPM CX-RAY 285MM SP BLK	12
21593	SPOKE, SPM CX-RAY 280MM SP BLK	12
20911	NIPPLE, HEX HIDDEN INTERNAL	24
85582	W ACC KIT, 46 AERO TL DB REAR	1
20333	REYNOLDS NEW PROD WEBSITE CARD	1
21013	VALVE STEM, TUBELESS 75MM LONG	1
21287	LOCK RING, CENTER LOCK	1
21289	ADAPTER, CL TO IS6-BOLT	1
85112	WHEEL BAG SINGLE, REYNOLDS	1



END CAP AND FREEHUB OPTIONS

21857	FREEHUB, AERO RB/DB XD 11 SPD
21858	FREEHUB, AERO RB/DB CAMPY 11 SPD
21867	END CAP, AERO DB FRT QR 5x100
21869	END CAP, AERO DB FRT TA 15x100
21870	END CAP, AERO DB REAR QR 5x135
21872	END CAP, AERO DB REAR TA 12x135



2017 AERO 65 CLINCHER ROAD DISC

77661 WS, 65AERO C TL DB SHIM 20/24

77663	W, 65AERO C TL DB FRONT 20H	1
67663	D RIM, H ₂ O AERO 65 C TL DB 20H	1
20915	RIM TAPE, TL 22MM 5.5M	1
21860	HUB, AERO DB CL SP FRNT 12MM 20H	1
21592	SPOKE, SPM CX-RAY 275MM SP BLK	10
20911	NIPPLE, HEX HIDDEN INTERNAL	20
85583	W ACC KIT, 65 AERO TL DB FRNT	1
85112	WHEEL BAG SINGLE, REYNOLDS	1
20333	REYNOLDS NEW PROD WEBSITE CARD	1
21786	VALVE STEM, TUBELESS 85MM LONG	1
21287	LOCK RING, CENTER LOCK	1
21289	ADAPTER, CL TO IS6-BOLT	1
21869	END CAP, AERO DB FRT TA 15x100	1
77664	W, 65AERO C TL DB SHIM 24H	1
67664	D RIM, H ₂ O AERO 65 C TL DB 24H	1
20915	RIM TAPE, TL 22MM 5.5M	1
21861	HUB, AERO DB CL SP SHIM 12X142MM 24H	1
21576	SPOKE, SPM CX-RAY 267MM SP BLK	12
21584	SPOKE, SPM CX-RAY 265MM SP BLK	12
20911	NIPPLE, HEX HIDDEN INTERNAL	24
85584	W ACC KIT, 65 AERO TL DB REAR	1
20333	REYNOLDS NEW PROD WEBSITE CARD	1
21786	VALVE STEM, TUBELESS 85MM LONG	1
21287	LOCK RING, CENTER LOCK	1
21289	ADAPTER, CL TO IS6-BOLT	1
85112	WHEEL BAG SINGLE, REYNOLDS	1



END CAP AND FREEHUB OPTIONS

21857	FREEHUB, AERO RB/DB XD 11 SPD
21858	FREEHUB, AERO RB/DB CAMPY 11 SPD
21867	END CAP, AERO DB FRT QR 5x100
21869	END CAP, AERO DB FRT TA 15x100
21870	END CAP, AERO DB REAR QR 5x135
21872	END CAP, AERO DB REAR TA 12x135



2017 ALLROADS RIM BRAKE



ATTACK



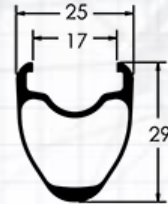
ASSAULT SLG



STRIKE SLG

2017 ATTACK TUBELESS CLINCHER PERFORMANCE ROAD

PART NO.	ITEM DESCRIPTION	QTY.
75280	WS, ATTACK C SHIM RB TL 20/24H	1
75282	W, ATTACK C FRONT RB TL 20H	1
20450	HUB, PERFORMANCE FRONT 20H SP	1
20311	NIPPLE, EXT BLACK ALLOY SQ HEAD	20
21557	SPOKE, SPM CX-SPRINT SP 282MM	20
65282	D RIM, INKJET ATTK C RB TL 20H	1
75283	W, ATTACK C SHIMANO RB TL 24H	1
20452	HUB, PERFORMANCE SHIM 24H SP	1
20311	NIPPLE, EXT BLACK ALLOY SQ HEAD	24
21558	SPOKE, SPM CX-SPRINT SP 284MM	12
21557	SPOKE, SPM CX-SPRINT SP 282MM	12
65283	D RIM, INKJET ATTK C RB TL 24H	1
	ACC KIT, ATTACK C RB SHIMANO	
20903	VALVE STEM, XC 37MM LONG	2
20918	RIM TAPE, TL 22MM 5.5M INSTALLED	2
20813	SKEWER, QR FRONT MID LEVEL	1
20814	SKEWER, QR REAR MID LEVEL	1
20797	BRAKE PAD, CRYO BL PWR SHIM 2PK	2
21190	0.9mm SPACER RING, SINGLE	2
75281	WS, ATTACK C CAMPY RB TL 20/24	1
75284	W, ATTACK C CAMPY RB TL 24H	1
20458	HUB, PERFORMANCE CAMPY 24H SP	1
20798	BRAKE PAD, CRYO BL PWR CAMP 2PK	2

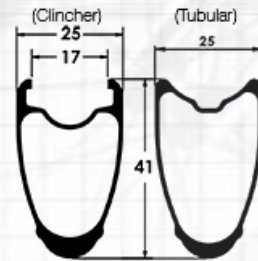


PART NO.	HUB COMPONENTS AND ACCESSORIES	QTY
21154 / 20699	FREEHUB, REYNOLDS 9/10/11 SHIMANO	
20072	FREEHUB, REYNOLDS 9/10/11 CAMPY	
21242	END CAP KIT FRONT HUB (PAIR)	
21243	END CAP KIT REAR HUB (PAIR)	
20700	REPLACEMENT AXLE FRONT HUB	
20698	REPLACEMENT AXLE REAR HUB	
20173	BEARING, FRONT HUB 6802RS	2
20156	BEARING, 6902RS REAR HUB DRIVE SIDE	1
20173	BEARING, 6802RS REAR HUB N/D SIDE	1



2017 ASSAULT SLG TUBELESS CLINCHER PERFORMANCE ROAD

PART NO.	ITEM DESCRIPTION	QTY
75381	WS, ASSAULT C SHIM RB TL 20/24	1
75383	W, ASSAULT C FRONT RB TL 20H	1
20450	HUB, PERFORMANCE FRONT 20H SP	1
20311	NIPPLE,EXT BLACK ALLOY SQ HEAD	20
21553	SPOKE, SPM CX-SPRNT SP 270MM	20
65383	D RIM, INKJET ASLT C RB TL 20H	1
75384	W, ASSAULT C SHIMANO RB TL 24H	1
20452	HUB, PERFORMANCE SHIM 24H SP	1
20311	NIPPLE,EXT BLACK ALLOY SQ HEAD	24
21553	SPOKE, SPM CX-SPRNT SP 270MM	12
21554	SPOKE, SPM CX-SPRNT SP 272MM	12
65384	D RIM, INKJET ASLT C RB TL 24H	1
	ACC KIT, ASLT C RB TL R SHIM	
21012	VALVE STEM, TUBELESS 55MM	2
20918	RIM TAPE,TL 22MM 5.5M INSTALED	2
20813	SKEWER, QR FRONT MID LEVEL	1
20814	SKEWER, QR REAR MID LEVEL	1
20797	BRAKE PAD,CRYO BL PWR SHIM 2PK	2
21190	0.9mm SPACER RING, SINGLE	2
75382	WS, ASSAULT C CAMPY RB TL 20/24	1
75385	W, ASSAULT C CAMPY RB TL 24H	1
20458	HUB, PERFORMANCE CAMPY 24H SP	1
20798	BRAKE PAD,CRYO BL PWR CAMP 2PK	2



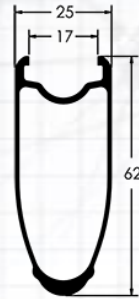
PART NO.	HUB COMPONENTS AND ACCESSORIES	QTY
21154 / 20699	FREEHUB, REYNOLDS 9/10/11 SHIMANO	
20072	FREEHUB, REYNOLDS 9/10/11 CAMPY	
21242	END CAP KIT FRONT HUB (PAIR)	
21243	END CAP KIT REAR HUB (PAIR)	
20700	REPLACEMENT AXLE FRONT HUB	
20698	REPLACEMENT AXLE REAR HUB	
20173	BEARING, FRONT HUB 6802RS	2
20156	BEARING, 6902RS REAR HUB DRIVE SIDE	1
20173	BEARING, 6802RS REAR HUB N/D SIDE	1



WARNING: The information contained herein is proprietary and confidential to Reynolds Cycling and Reynolds Cycling affiliates. This document is not intended for public distribution or disclosure. This document may be referenced and reproduced for and by Reynolds Cycling and Reynolds Cycling affiliates only.

2017 STRIKE SLG TUBELESS CLINCHER PERFORMANCE ROAD

PART NO.	ITEM DESCRIPTION	QTY.
75481	WS, STRIKE C SHIM RB TL 16/20H	1
75483	W, STRIKE C FRONT RB TL 16H	1
20449	HUB, PERFORMANCE FRONT 16H SP	1
20311	NIPPLE,EXT BLACK ALLOY SQ HEAD	16
21550	SPOKE, SPM CX-SPRNT SP 252MM	16
65483	D RIM, INKJET,STRK C RB TL 16H	1
75484	W, STRIKE C SHIMANO RB TL 20H	1
20451	HUB, PERFORMANCE SHIM 20H SP	1
20311	NIPPLE,EXT BLACK ALLOY SQ HEAD	20
21550	SPOKE, SPM CX-SPRNT SP 252MM	10
21549	SPOKE, SPM CX-SPRNT SP 244MM	10
65484	D RIM, INKJET,STRK C RB TL 20H	1
W KIT, STRIKE C RB TL R SHI		
21013	VALVE STEM, TUBELESS 75MM	2
20918	RIM TAPE, TL 22MM 5.5M INSTALED	2
20813	SKEWER, QR FRONT MID LEVEL	1
20814	SKEWER, QR REAR MID LEVEL	1
20797	BRAKE PAD, CRYO BL PWR SHIM 2PK	2
21190	0.9mm SPACER RING, SINGLE	2
75482	WS, STRIKE C CAMPY RB TL 16/20	1
75485	W, STRIKE C CAMPY RB TL 20H	1
20457	HUB, PERFORMANCE CAMPY 20H SP	1
20798	BRAKE PAD, CRYO BL PWR CAMP 2PK	1



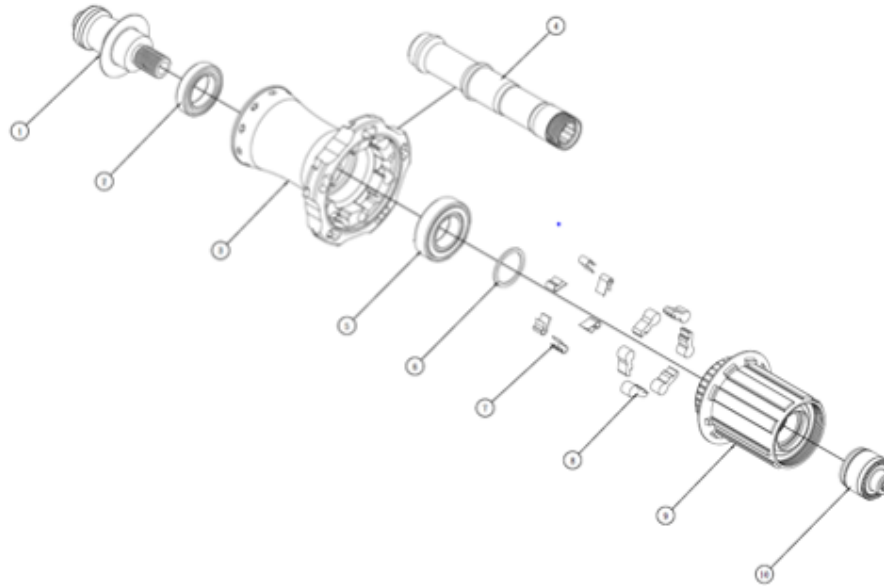
PART NO.	HUB COMPONENTS AND ACCESSORIES	QTY
21154 / 20699	FREEHUB, REYNOLDS 9/10/11 SHIMANO	
20072	FREEHUB, REYNOLDS 9/10/11 CAMPY	
21242	END CAP KIT FRONT HUB (PAIR)	
21243	END CAP KIT REAR HUB (PAIR)	
20700	REPLACEMENT AXLE FRONT HUB	
20698	REPLACEMENT AXLE REAR HUB	
20173	BEARING, FRONT HUB 6802RS	2
20156	BEARING, 6902RS REAR HUB DRIVE SIDE	1
20173	BEARING, 6802RS REAR HUB N/D SIDE	1



WARNING: The information contained herein is proprietary and confidential to Reynolds Cycling and Reynolds Cycling affiliates. This document is not intended for public distribution or disclosure. This document may be referenced and reproduced for and by Reynolds Cycling and Reynolds Cycling affiliates only.

2017 PERFORMANCE REAR HUB: ATTACK, ASSAULT & STRIKE

LS1R/LS5R (Performance Shimano/Campagnolo)



Item	Description	QTY	Campy Part No.	Shimano Part No.
1	End Cap (NDS)	1	21243**	21236**
2	Bearing (6802)	1	20173	20173
3	Hub Shell	1	-	-
4	Axle	1	20698	20698
5	Bearing (6902RS)	1	20156	20156
6	Washer	1	-	-
7	Spring	6	-	-
8	Pawl	6	-	-
9	Cassette Body Set	1	20072	21154
10	End Cap (DS)	1	21243**	21236**

Shimano Hub Options		Freehub Conversion Kit	
Part No.	Description	Part No.	Description
20451	HUB, PERFORMANCE SHIM 20H 5P (LS1R)	20052*	Shimano (freehub, washer (6), seal, end caps, 11 speed)
20452	HUB, PERFORMANCE SHIM 24H 5P (LS1R)	(20072 + 21243)***	Campy (freehub, washer (6), seal, no end caps, 9/10/11 spd)
20457	HUB, PERFORMANCE CAMPY 20H 5P (LS1R)		
20458	HUB, PERFORMANCE CAMPY 24H 5P (LS1R)		

* Shimano freehub body, part #21154, and end cap kit, part #21236, comprise the #20052 kit.

**Sold as set (DS, NDS)

***Only use drive side end cap and don't use .5mm washer included in #20072

2017 REYNOLDS ALLROADS CARBON DISC WHEELS



**ATTACK DISC
BRAKE**



**STRIKE DISC
BRAKE**



**ASSAULT DISC
BRAKE**

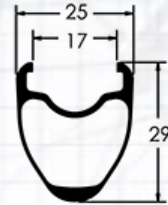


ATR - GRAVEL

2017 ATTACK TUBELESS CLINCHER ROAD DISC BRAKE

77271 WS, ATTACK C TL DB SHIM 24/24

77273	ATTACK C TL DB FRONT 24H	1
67274	D RIM, H ₂ O ATTACK C TL DB 24H	1
20915	RIM TAPE, TL 22MM 5.5M	1
22100	HUB, ALLRD FRNT CL DB 12MM 24H	1
21649	SPOKE, SPM CXSPNT 293MM SP BLK	24
20311	NIPPLE,EXT BLACK ALLOY SQ HEAD	24
85575	W ACC KIT, ATTACK DB FRNT	1
3040	9 X 12 X 4MIL ZIP LOCK BAG	1
20333	REYNOLDS NEW PROD WEBSITE CARD	1
21011	VALVE STEM, XC 45MM LONG	1
21287	LOCK RING, CENTER LOCK	1
21289	ADAPTER, CL TO IS6-BOLT	1
22122	END CAP, ALLRD FRNT 15MM TA PAIR	1
77274	W, ATTACK C TL DB SHIM 24H	1
67274	D RIM, H ₂ O ATTACK C TL DB 24H	1
20915	RIM TAPE, TL 22MM 5.5M	1
22102	HUB, ALLRD CL DB SHIM 24H	1
21650	SPOKE, SPM CXSPNT 295MM SP BLK	12
21562	SPOKE, SPM CXSPNT 291MM SP BLK	12
20311	NIPPLE,EXT BLACK ALLOY SQ HEAD	24
85576	W ACC KIT, ATTACK DB SHIM / XD	1
20333	REYNOLDS NEW PROD WEBSITE CARD	1
21011	VALVE STEM, XC 45MM LONG	1
21287	LOCK RING, CENTER LOCK	1
21289	ADAPTER, CL TO IS6-BOLT	1



77274	W, ATTACK C TL DB SHIM 24H	1
67274	D RIM, H ₂ O ATTACK C TL DB 24H	1
20915	RIM TAPE, TL 22MM 5.5M	1
22102	HUB, ALLRD CL DB SHIM 24H	1
21650	SPOKE, SPM CXSPNT 295MM SP BLK	12
21562	SPOKE, SPM CXSPNT 291MM SP BLK	12
20311	NIPPLE,EXT BLACK ALLOY SQ HEAD	24
85576	W ACC KIT, ATTACK DB SHIM / XD	1
20333	REYNOLDS NEW PROD WEBSITE CARD	1
21011	VALVE STEM, XC 45MM LONG	1
21287	LOCK RING, CENTER LOCK	1
21289	ADAPTER, CL TO IS6-BOLT	1

PART NO.	HUB COMPONENTS AND ACCESSORIES	QTY
22145	FREEHUB, GW SHIM 11 SPD	
22147	FREEHUB, GW CAMPY 11 SPD	
22146	FREEHUB, GW XD 11 SPD	
22121	END CAP, GW DB FRNT 12MM TA	
22122	END CAP, GW DB FRNT 15MM TA	
22120	END CAP, GW DB FRNT 9MM QR	
22128	END CAP, GW DB R 12/142 TA	
22124	END CAP, GW DB R 9/135 QR	
22126	END CAP, GW DB R 12/135 TA	
22161	AXLE, GW FRONT TA	
22158	AXLE, GW DB REAR 15/12/135	
20163	BEARING, 6902 S&S	4
21289	ADAPTER, CL TO IS6-BOLT	2
21287	LOCK RING, CENTER LOCK	2

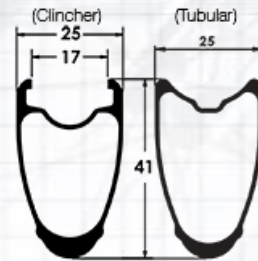


WARNING: The information contained herein is proprietary and confidential to Reynolds Cycling and Reynolds Cycling affiliates. This document is not intended for public distribution or disclosure. This document may be referenced and reproduced for and by Reynolds Cycling and Reynolds Cycling affiliates only.

2017 ASSAULT TUBELESS CLINCHER ROAD DISC BRAKE

77361 WS, ASSAULT C TL DB SHIM 24/24

77363	ASSAULT C TL DB FRONT 24H	1
67364	D RIM, H ₂ O ASSAULT C TL DB 24H	1
20915	RIM TAPE, TL 22MM 5.5M	1
22100	HUB, ALLRD FRNT CL DB 12MM 24H	1
21648	SPOKE, SPM CXSPNT 281MM SP BLK	24
20311	NIPPLE, EXT BLACK ALLOY SQ HEAD	24
85577	W ACC KIT, ASSAULT DB FRNT	1
20333	REYNOLDS NEW PROD WEBSITE CARD	1
21012	VALVE STEM, XC 55MM LONG	1
21287	LOCK RING, CENTER LOCK	1
21289	ADAPTER, CL TO IS6-BOLT	1
22122	END CAP, ALLRD FRNT 15MM TA PAIR	1
77364	W, ASSAULT C TL DB SHIM 24H	1
67364	D RIM, H ₂ O ASSAULT C TL DB 24H	1
20915	RIM TAPE, TL 22MM 5.5M	1
22102	HUB, ALLRD CL DB SHIM 24H	1
21557	SPOKE, SPM CXSPNT 282MM SP BLK	12
21564	SPOKE, SPM CXSPNT 279MM SP BLK	12
20311	NIPPLE, EXT BLACK ALLOY SQ HEAD	24
85578	W ACC KIT, ASSAULT DB SHIM / XD	1
20333	REYNOLDS NEW PROD WEBSITE CARD	1
21012	VALVE STEM, XC 55MM LONG	1
21287	LOCK RING, CENTER LOCK	1
21289	ADAPTER, CL TO IS6-BOLT	1



PART NO.	HUB COMPONENTS AND ACCESSORIES	QTY
22145	FREEHUB, GW SHIM 11 SPD	
22147	FREEHUB, GW CAMPY 11 SPD	
22146	FREEHUB, GW XD 11 SPD	
22121	END CAP, GW DB FRNT 12MM TA	
22122	END CAP, GW DB FRNT 15MM TA	
22120	END CAP, GW DB FRNT 9MM QR	
22128	END CAP, GW DB R 12/142 TA	
22124	END CAP, GW DB R 9/135 QR	
22126	END CAP, GW DB R 12/135 TA	
22161	AXLE, GW FRONT TA	
22158	AXLE, GW DB REAR 15/12/135	
20163	BEARING, 6902 S&S	4
21289	ADAPTER, CL TO IS6-BOLT	2
21287	LOCK RING, CENTER LOCK	2



WARNING: The information contained herein is proprietary and confidential to Reynolds Cycling and Reynolds Cycling affiliates. This document is not intended for public distribution or disclosure. This document may be referenced and reproduced for and by Reynolds Cycling and Reynolds Cycling affiliates only.

2017 STRIKE TUBELESS CLINCHER ROAD DISC BRAKE

77461	WS, STRIKE C TL DB SHIM 24/24	
77463	STRIKE C TL DB FRONT 24H	1
67464	D RIM, H ₂ O STRIKE C TL DB 24H	1
20915	RIM TAPE, TL 22MM 5.5M	1
22100	HUB, ALLRD FRNT CL DB 12MM 24H	1
21551	SPOKE, SPM CXSPNT 260 SP BLK	12
21660	SPOKE, SPM CXSPNT 262 SP BLK	12
20311	NIPPLE, EXT BLACK ALLOY SQ HEAD	24
85579	W ACC KIT, STRIKE DB FRNT	1
20333	REYNOLDS NEW PROD WEBSITE CARD	1
21013	VALVE STEM, XC 75MM LONG	1
21287	LOCK RING, CENTER LOCK	1
21289	ADAPTER, CL TO IS6-BOLT	1
22122	END CAP, ALLRD FRNT 15MM TA PAIR	1
77464	W, STRIKE C TL DB SHIM 24H	1
67464	D RIM, H ₂ O STRIKE C TL DB 24H	1
20915	RIM TAPE, TL 22MM 5.5M	1
22102	HUB, ALLRD CL DB SHIM 24H	1
21551	SPOKE, SPM CXSPNT 260 SP BLK	12
21647	SPOKE, SPM CXSPNT 264 SP BLK	12
20311	NIPPLE, EXT BLACK ALLOY SQ HEAD	24
85580	W ACC KIT, STRIKE DB SHIM / XD	1
20333	REYNOLDS NEW PROD WEBSITE CARD	1
21013	VALVE STEM, XC 75MM LONG	1
21287	LOCK RING, CENTER LOCK	1
21289	ADAPTER, CL TO IS6-BOLT	1



PART NO.	HUB COMPONENTS AND ACCESSORIES	QTY
22145	FREEHUB, GW SHIM 11 SPD	
22147	FREEHUB, GW CAMPY 11 SPD	
22146	FREEHUB, GW XD 11 SPD	
22121	END CAP, GW DB FRNT 12MM TA	
22122	END CAP, GW DB FRNT 15MM TA	
22120	END CAP, GW DB FRNT 9MM QR	
22128	END CAP, GW DB R 12/142 TA	
22124	END CAP, GW DB R 9/135 QR	
22126	END CAP, GW DB R 12/135 TA	
22161	AXLE, GW FRONT TA	
22158	AXLE, GW DB REAR 15/12/135	
20163	BEARING, 6902 S&S	4
21289	ADAPTER, CL TO IS6-BOLT	2
21287	LOCK RING, CENTER LOCK	2



WARNING: The information contained herein is proprietary and confidential to Reynolds Cycling and Reynolds Cycling affiliates. This document is not intended for public distribution or disclosure. This document may be referenced and reproduced for and by Reynolds Cycling and Reynolds Cycling affiliates only.

2017 ATR: ALL TERRAIN ROAD GRAVEL / ROAD DISC TUBELESS CLINCHER

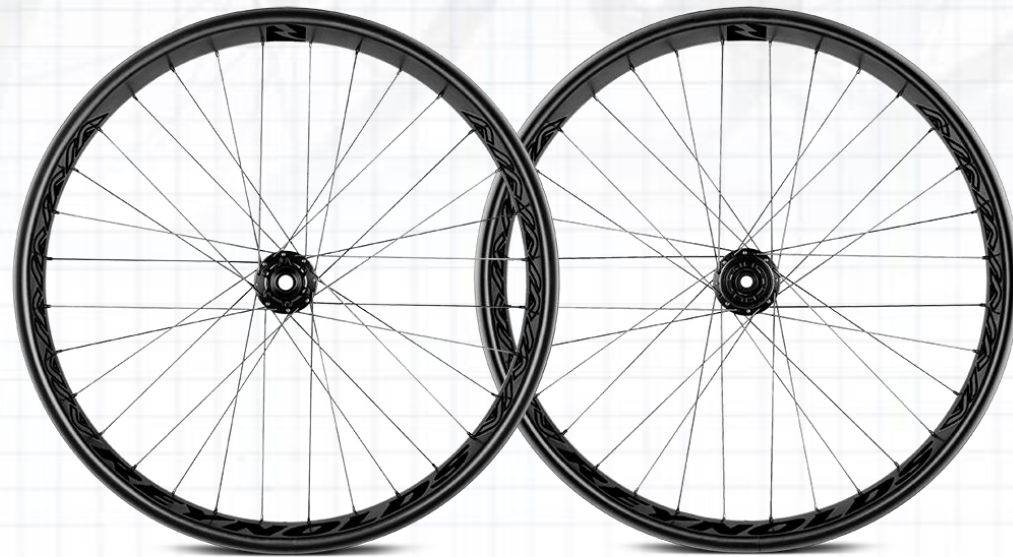
PART NO.	ITEM DESCRIPTION	QTY.
80991	WS, 29AM ATR GRAVEL MTN	1
80911	W, 29AM ATR GRAVEL FRONT CL 24	1
20324	HUB, PERFORMANCE CL DB FRT 24H SP	1
20996	NIPPLE, 12MM BLACK EXTERNAL	24
21681	SPOKE, SAPIM LASER SP 288MM	24
21682	SPOKE, SAPIM LASER SP 289MM	24
51543	D RIM, MTN 29er TUBELESS C 24H	1
21449	DECAL, 29AM ATR GRAVEL	1
80912	W, 29AM ATR GRAVEL REAR CL 24	1
20325	HUB, PERFORMANCE CL DB SHIM 24H SP	1
20996	NIPPLE, 12MM BLACK EXTERNAL	1
20220	SPOKE, SAPIM LASER SP 286MM	12
21679	SPOKE, SAPIM LASER SP 290MM	12
51543	D RIM, MTN 29er TUBELESS C 24H	1
21449	DECAL, 29AM ATR GRAVEL	1
20907	RIM TAPE, TUBELESS 25MM 11 M	2
W ACC KIT, 29AM ATR GRAVEL		
20904	VALVE STEM, AM 45MM LONG	2
20907	RIM TAPE, TUBELESS 25MM 11 M	1
20813	SKEWER, QR FRONT MID LEVEL	1
20815	SKEWER, QR REAR MID LEVEL MTN	1
21190	0.9mm SPACER RING, SINGLE	1



PART NO.	ITEM DESCRIPTION	QTY
21154 / 20699	FREEHUB, REYNOLDS 9/10/11 SHIMANO	
20072	FREEHUB, REYNOLDS 9/10/11 CAMPY	
21252	END CAP KIT FRONT HUB 12MM (PAIR)	
20322	END CAP KIT FRONT HUB 15MM (PAIR)	
21182	END CAP KIT FRONT HUB QR (PAIR)	
20323	END CAP KIT REAR HUB 14X12MM (PAIR)	
21183	END CAP KIT REAR HUB QR (PAIR)	
20698	REPLACEMENT AXLE REAR HUB	
20157	BEARING, FRONT HUB 6802RS	3
20157	BEARING, 6802RS REAR HUB	2
21289	CENTERLOCK BRAKE ADAPTER	2



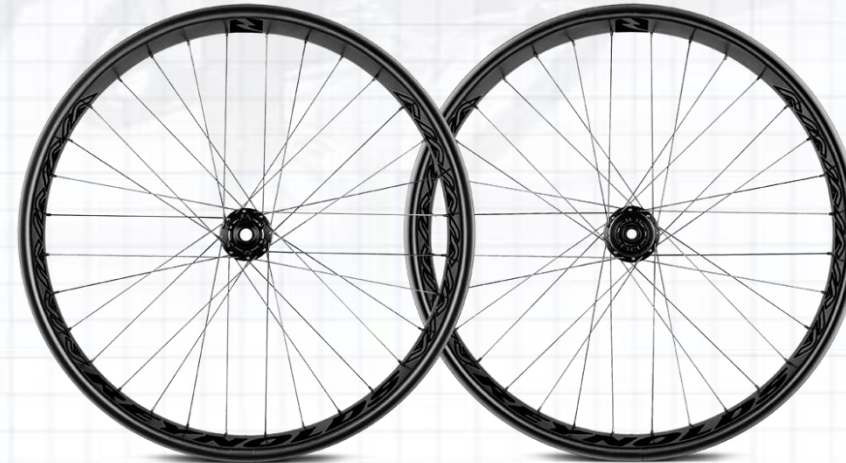
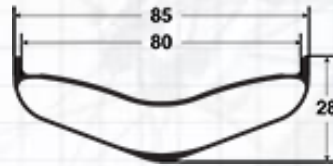
2017 REYNOLDS CARBON FATBIKE MOUNTAIN WHEEL



DEAN

2017 DEAN 26 FATBIKE 177MM TUBELESS CARBON MOUNTAIN

PART NO.	ITEM DESCRIPTION	QTY
77801	WS, FATBIKE 80 177 32/32H	1
77803	W, FATBIKE 80 F 150 32 HOLE	1
20311	NIPPLE,EXT BLACK ALLOY SQ HEAD	32
21712	SPOKE, SPM RACE 255MM JB BLK	16
21715	SPOKE, SPM RACE 258MM JB BLK	16
21918	DECAL, REY FATBIKE BLACK/BLACK	1
21832	HUB, i9 FB JB IS6 32H 150X12TA	1
56800	D RIM, FATBIKE 80MM 32H	1
77804	W, FATBIKE 80 R XD 177 32H	1
20311	NIPPLE,EXT BLACK ALLOY SQ HEAD	32
21711	SPOKE, SPM RACE 254MM JB BLK	16
21712	SPOKE, SPM RACE 255MM JB BLK	16
21918	DECAL, REY FATBIKE BLACK/BLACK	1
21833	HUB, i9 FB JB IS6 XD 32H 177	1
56800	D RIM, FATBIKE 80MM 32H	1
	W ACC KIT, REY DH/FATBIKE TL	
20908	RIM TAPE, TUBELESS 28MM 11 M	1
20904	VALVE STEM, AM 45MM LONG	2

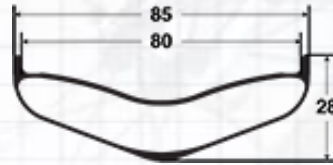


PART NO.	HUB COMPONENTS AND ACCESSORIES	QTY
21844	FREEHUB, i9 SHIMANO 9/10/11	
21845	FREEHUB, i9 SRAM XD11	
20165	BEARING, FRONT HUB BB18307	2
20166	BEARING, FREEHUB BB31803	1
20167	BEARING, REAR HUB BB61803	1
20168	BEARING, REAR HUBBB 61903	2



2017 DEAN 26 FATBIKE 197MM TUBELESS CARBON MOUNTAIN

PART NO.	ITEM DESCRIPTION	QTY
77801	WS, FATBIKE 80 177 32/32H	1
77803	W, FATBIKE 80 F 150 32 HOLE	1
20311	NIPPLE,EXT BLACK ALLOY SQ HEAD	32
21712	SPOKE, SPM RACE 255MM JB BLK	16
21715	SPOKE, SPM RACE 258MM JB BLK	16
21918	DECAL, REY FATBIKE BLACK/BLACK	1
21832	HUB, i9 FB JB IS6 32H 150X12TA	1
56800	D RIM, FATBIKE 80MM 32H	1
77805	W, FATBIKE 80 R XD 177 32H	1
20311	NIPPLE,EXT BLACK ALLOY SQ HEAD	32
21714	SPOKE, SPM RACE 257MM JB BLK	16
21715	SPOKE, SPM RACE 258MM JB BLK	16
21918	DECAL, REY FATBIKE BLACK/BLACK	1
21834	HUB, i9 FB JB IS6 XD 32H 197	1
56800	D RIM, FATBIKE 80MM 32H	1
	W ACC KIT, REY DH/FATBIKE TL	
20908	RIM TAPE, TUBELESS 28MM 11 M	1
20904	VALVE STEM, AM 45MM LONG	2

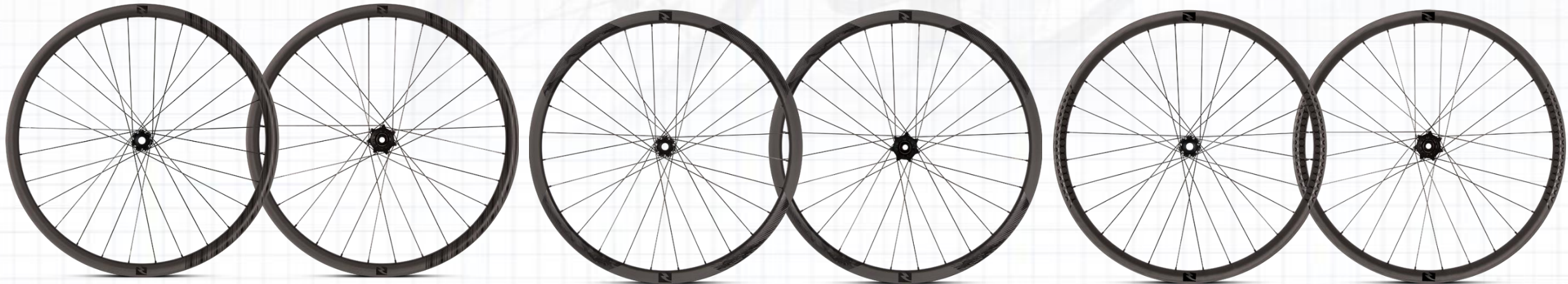


PART NO.	HUB COMPONENTS AND ACCESSORIES	QTY
21844	FREEHUB, i9 SHIMANO 9/10/11	
21845	FREEHUB, i9 SRAM XD11	
20165	BEARING, FRONT HUB BB18307	2
20166	BEARING, FREEHUB BB31803	1
20167	BEARING, REAR HUB BB61803	1
20168	BEARING, REAR HUBBB 61903	2



WARNING: The information contained herein is proprietary and confidential to Reynolds Cycling and Reynolds Cycling affiliates. This document is not intended for public distribution or disclosure. This document may be referenced and reproduced for and by Reynolds Cycling and Reynolds Cycling affiliates only.

2017 REYNOLDS BLACK LABEL CARBON 27.5 MOUNTAIN WHEELS



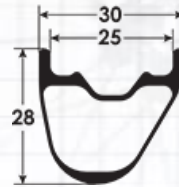
27.5 TRAIL ASYM

27.5 ENDURO ASYM

27.5 PLUS

2017 BLACK LABEL 27.5 TRAIL TUBELESS CARBON MOUNTAIN

PART NO.	ITEM DESCRIPTION	QTY
77501	WS, 27.5 TRAIL BL ASYM 28/28H	1
77503	W, 27.5 TRAIL BL ASYM FRNT 28H	1
21826	HUB, MTN i9 SP CL 28H 100x15TA	1
20311	NIPPLE,EXT BLACK ALLOY SQ HEAD	28
21595	SPOKE, SPM CX-RAY 282MM SP BLK	28
66503	D RIM, H ₂ O 27.5 TRAIL ASYM 28H	1
77504	W, 27.5 TRAIL BL ASYM SHIM 28H	1
21828	HUB, MTN i9 SP CLSHIM28H142x12	1
20311	NIPPLE,EXT BLACK ALLOY SQ HEAD	28
21594	SPOKE, SPM CX-RAY 282MM SP BLK	28
66503	D RIM, H ₂ O 27.5 TRAIL ASYM 28H	1
W ACC KIT, MTN ASYM TL		
20908	RIM TAPE, TUBELESS 28MM 11 M	1
20904	VALVE STEM, AM 45MM LONG	2
21287	LOCK RING, CENTER LOCK	2
21289	ADAPTER, CL TO IS6-BOLT	2



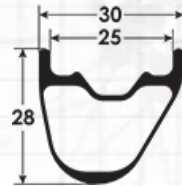
PART NO.	HUB COMPONENTS AND ACCESSORIES	QTY
21844	FREEHUB, i9 SHIM 10SP COMPLETE	
21845	FREEHUB, i9 XD 11SP COMPLETE	
21840	END CAP, i9 FRONT 15mm TA	
21841	END CAP, i9 REAR MTN 12mm TA	
21842	END CAP,i9 FRT QR CL	
21843	END CAP i9, REAR CL QR	
21848	AXLE, i9 MTN FRT CL 100mm HUB	
21849	AXLE, i9 MTN FRT CL 110mm HUB	
21850	AXLE, i9 MTN REAR CL12x142 HUB	
21851	AXLE, i9 MTN REAR CL12x148 HUB	
20165	BEARING, ENDURO 18307 ABEC 5	2
20166	BEARING, ENDURO 31803 ABEC 5	1
20167	BEARING, ENDURO 61803 ABEC 5	1
20168	BEARING, ENDURO 61903 ABEC 5	2



WARNING: The information contained herein is proprietary and confidential to Reynolds Cycling and Reynolds Cycling affiliates. This document is not intended for public distribution or disclosure. This document may be referenced and reproduced for and by Reynolds Cycling and Reynolds Cycling affiliates only.

2017 BLACK LABEL 27.5 TRAIL BST TUBELESS CARBON MOUNTAIN

PART NO.	ITEM DESCRIPTION	QTY
77506	WS, 27.5 TRAIL BL ASYM BST 28/28H	1
77508	W, 27.5 TRAIL BL ASYM BST FRNT 28H	1
21827	HUB, MTN i9 SP CL 28H 110x15TA	1
20311	NIPPLE,EXT BLACK ALLOY SQ HEAD	28
21595	SPOKE, SPM CX-RAY 282MM SP BLK	28
66503	D RIM, H ₂ O 27.5 TRAIL ASYM 28H	1
77509	W, 27.5 TRAIL BL ASYM BST SHIM 28H	1
21829	HUB, MTN i9 SP CLSHIM28H148x12	1
20311	NIPPLE,EXT BLACK ALLOY SQ HEAD	28
21594	SPOKE, SPM CX-RAY 282MM SP BLK	28
66503	D RIM, H ₂ O 27.5 TRAIL ASYM 28H	1
	W ACC KIT, MTN ASYM TL	
20908	RIM TAPE, TUBELESS 28MM 11 M	1
20904	VALVE STEM, AM 45MM LONG	2
21287	LOCK RING, CENTER LOCK	2
21289	ADAPTER, CL TO IS6-BOLT	2



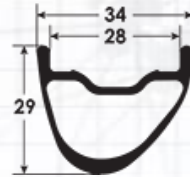
PART NO.	HUB COMPONENTS AND ACCESSORIES	QTY
21844	FREEHUB, i9 SHIM 10SP COMPLETE	
21845	FREEHUB, i9 XD 11SP COMPLETE	
21840	END CAP, i9 FRONT 15mm TA	
21841	END CAP, i9 REAR MTN 12mm TA	
21842	END CAP, i9 FRT QR CL	
21843	END CAP i9, REAR CL QR	
21848	AXLE, i9 MTN FRT CL 100mm HUB	
21849	AXLE, i9 MTN FRT CL 110mm HUB	
21850	AXLE, i9 MTN REAR CL12x142 HUB	
21851	AXLE, i9 MTN REAR CL12x148 HUB	
20165	BEARING, ENDURO 18307 ABEC 5	2
20166	BEARING, ENDURO 31803 ABEC 5	1
20167	BEARING, ENDURO 61803 ABEC 5	1
20168	BEARING, ENDURO 61903 ABEC 5	2



WARNING: The information contained herein is proprietary and confidential to Reynolds Cycling and Reynolds Cycling affiliates. This document is not intended for public distribution or disclosure. This document may be referenced and reproduced for and by Reynolds Cycling and Reynolds Cycling affiliates only.

2017 BLACK LABEL 27.5 ENDURO TUBELESS CARBON MOUNTAIN

PART NO.	ITEM DESCRIPTION	QTY
77511	WS, 27.5 ENDURO BL ASYM 28/28H	1
77513	W,27.5 ENDURO BL ASYM FRNT 28H	1
20311	NIPPLE,EXT BLACK ALLOY SQ HEAD	28
21594	SPOKE, SPM CX-RAY 281MM SP BLK	14
21595	SPOKE, SPM CX-RAY 282MM SP BLK	14
21826	HUB, MTN i9 SP CL 28H 100x15TA	1
66513	D RIM, H ₂ O 27.5 END ASYM 28H	1
77514	W,27.5 ENDURO BL ASYM SHIM 28H	1
20311	NIPPLE,EXT BLACK ALLOY SQ HEAD	28
21594	SPOKE, SPM CX-RAY 281MM SP BLK	28
21828	HUB, MTN i9 SP CLSHIM28H142x12	1
66513	D RIM, H ₂ O 27.5 END ASYM 28H	1
	W ACC KIT, MTN 27.5 & 29 ASYM	
20908	RIM TAPE, TUBELESS 28MM 11 M	1
20904	VALVE STEM, AM 45MM LONG	2
21287	LOCK RING, CENTER LOCK	2
21289	ADAPTER, CL TO IS6-BOLT	2



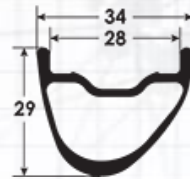
PART NO.	HUB COMPONENTS AND ACCESSORIES	QTY
21844	FREEHUB, i9 SHIM 10SP COMPLETE	
21845	FREEHUB, i9 XD 11SP COMPLETE	
21840	END CAP, i9 FRONT 15mm TA	
21841	END CAP, i9 REAR MTN 12mm TA	
21842	END CAP,i9 FRT QR CL	
21843	END CAP i9, REAR CL QR	
21848	AXLE, i9 MTN FRT CL 100mm HUB	
21849	AXLE, i9 MTN FRT CL 110mm HUB	
21850	AXLE, i9 MTN REAR CL12x142 HUB	
21851	AXLE, i9 MTN REAR CL12x148 HUB	
20165	BEARING, ENDURO 18307 ABEC 5	2
20166	BEARING, ENDURO 31803 ABEC 5	1
20167	BEARING, ENDURO 61803 ABEC 5	1
20168	BEARING, ENDURO 61903 ABEC 5	2



WARNING: The information contained herein is proprietary and confidential to Reynolds Cycling and Reynolds Cycling affiliates. This document is not intended for public distribution or disclosure. This document may be referenced and reproduced for and by Reynolds Cycling and Reynolds Cycling affiliates only.

2017 BLACK LABEL 27.5 ENDURO BST TUBELESS CARBON MOUNTAIN

PART NO.	ITEM DESCRIPTION	QTY
77511	WS, 27.5 ENDURO BL ASYM BST 28/28H	1
77518	W,27.5 ENDURO BL ASYM BST FRNT 28H	1
20311	NIPPLE,EXT BLACK ALLOY SQ HEAD	28
21594	SPOKE, SPM CX-RAY 281MM SP BLK	14
21595	SPOKE, SPM CX-RAY 282MM SP BLK	14
21827	HUB, MTN i9 SP CL 28H 110x15TA	1
66513	D RIM, H ₂ O 27.5 END ASYM 28H	1
77519	W,27.5 ENDURO BL ASYM BST SHIM 28H	1
20311	NIPPLE,EXT BLACK ALLOY SQ HEAD	28
21594	SPOKE, SPM CX-RAY 281MM SP BLK	28
21829	HUB, MTN i9 SP CLSHIM28H148x12	1
66513	D RIM, H ₂ O 27.5 END ASYM 28H	1
	W ACC KIT, MTN 27.5 & 29 ASYM	
20908	RIM TAPE, TUBELESS 28MM 11 M	1
20904	VALVE STEM, AM 45MM LONG	2
21287	LOCK RING, CENTER LOCK	2
21289	ADAPTER, CL TO IS6-BOLT	2

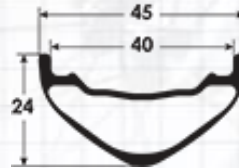


PART NO.	HUB COMPONENTS AND ACCESSORIES	QTY
21844	FREEHUB, i9 SHIM 10SP COMPLETE	
21845	FREEHUB, i9 XD 11SP COMPLETE	
21840	END CAP, i9 FRONT 15mm TA	
21841	END CAP, i9 REAR MTN 12mm TA	
21842	END CAP,i9 FRT QR CL	
21843	END CAP i9, REAR CL QR	
21848	AXLE, i9 MTN FRT CL 100mm HUB	
21849	AXLE, i9 MTN FRT CL 110mm HUB	
21850	AXLE, i9 MTN REAR CL12x142 HUB	
21851	AXLE, i9 MTN REAR CL12x148 HUB	
20165	BEARING, ENDURO 18307 ABEC 5	2
20166	BEARING, ENDURO 31803 ABEC 5	1
20167	BEARING, ENDURO 61803 ABEC 5	1
20168	BEARING, ENDURO 61903 ABEC 5	2



2017 BLACK LABEL 27.5 PLUS TUBELESS CARBON MOUNTAIN

PART NO.	ITEM DESCRIPTION	QTY
77521	WS, 27.5 PLUS BL 28/28H	1
77523	W, 27.5 PLUS BL FRONT 28H	1
20311	NIPPLE,EXT BLACK ALLOY SQ HEAD	28
21495	DECAL, 27.5 PLUS BL	1
21596	SPOKE, SPM CX-RAY 283MM SP BLK	14
21605	SPOKE, SPM CX-RAY 285MM SP BLK	14
21827	HUB, MTN i9 SP CL 28H 110x15TA	1
66523	D RIM, H ₂ O 27.5 PLUS 28H	1
77524	W, 27.5 PLUS BL SHIMANO 28H	1
20311	NIPPLE,EXT BLACK ALLOY SQ HEAD	28
21495	DECAL, 27.5 PLUS BL	1
21531	SPOKE, SPM CX-RAY 284MM SP BLK	28
21829	HUB, MTN i9 SP CLSHIM28H148x12	1
66523	D RIM, H ₂ O 27.5 PLUS 28H	1
	W ACC KIT, MTN 27.5 PLUS	
20904	VALVE STEM, AM 45MM LONG	2
20908	RIM TAPE, TUBELESS 28MM 11 M	1
21287	LOCK RING, CENTER LOCK	2
21289	ADAPTER, CL TO IS6-BOLT	2



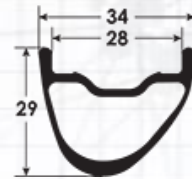
PART NO.	HUB COMPONENTS AND ACCESSORIES	QTY
21844	FREEHUB, i9 SHIM 10SP COMPLETE	
21845	FREEHUB, i9 XD 11SP COMPLETE	
21840	END CAP, i9 FRONT 15mm TA	
21841	END CAP, i9 REAR MTN 12mm TA	
21842	END CAP,i9 FRT QR CL	
21843	END CAP i9, REAR CL QR	
21848	AXLE, i9 MTN FRT CL 100mm HUB	
21849	AXLE, i9 MTN FRT CL 110mm HUB	
21850	AXLE, i9 MTN REAR CL12x142 HUB	
21851	AXLE, i9 MTN REAR CL12x148 HUB	
20165	BEARING, ENDURO 18307 ABEC 5	2
20166	BEARING, ENDURO 31803 ABEC 5	1
20167	BEARING, ENDURO 61803 ABEC 5	1
20168	BEARING, ENDURO 61903 ABEC 5	2



WARNING: The information contained herein is proprietary and confidential to Reynolds Cycling and Reynolds Cycling affiliates. This document is not intended for public distribution or disclosure. This document may be referenced and reproduced for and by Reynolds Cycling and Reynolds Cycling affiliates only.

2017 BLACK LABEL 27.5 DH LTD BK EDITION CARBON MOUNTAIN

PART NO.	ITEM DESCRIPTION	QTY
77551	WS, 27.5 DH LTD ASYM 32/32H	
77553	W, 27.5 DH LTD ASYM FRNT 32H	1
57554	D RIM, 27.5 DOWNHILL ASYM 32H	1
21886	RIM TAPE, TL 30MM 5.5M INSTALED	1
21924	HUB, i9 DH JB IS6 FRNT 32H BLU	1
21753	SPOKE, SPM SPRINT 263MM JB BLK	16
21757	SPOKE, SPM SPRINT 267MM JB BLK	16
20315	NIPPLE, BRASS 14MM BLACK EXT	32
22050	DECAL, PIVOT DH TEAM GREEN x2	1
22049*	DECAL, PIVOT DH TEAM BLACK	1
20120	BOX, TW DBLE WHL RNLD WIDE29er	0.5
85181	W ACC KIT, REY DH/FATBIKE TL	1
20904	VALVE STEM, AM 45MM LONG	1
77554	W, 27.5 DH LTD ASYM SHIM 32H	1
57554	D RIM, 27.5 DOWNHILL ASYM 32H	1
21886	RIM TAPE, TL 30MM 5.5M INSTALED	1
21925	HUB, i9 DH JB IS6 SHIM 32H BLU	1
21755	SPOKE, SPM SPRINT 265MM JB BLK	16
21756	SPOKE, SPM SPRINT 266MM JB BLK	16
20315	NIPPLE, BRASS 14MM BLACK EXT	32
22050	DECAL, PIVOT DH TEAM GREEN x2	1
20120	BOX, TW DBLE WHL RNLD WIDE29er	0.5
22048	DECAL, B KERR DH LTD BLUE	1
22049*	DECAL, PIVOT DH TEAM BLACK	1
85181	W ACC KIT, REY DH/FATBIKE TL	1
20904	VALVE STEM, AM 45MM LONG	1

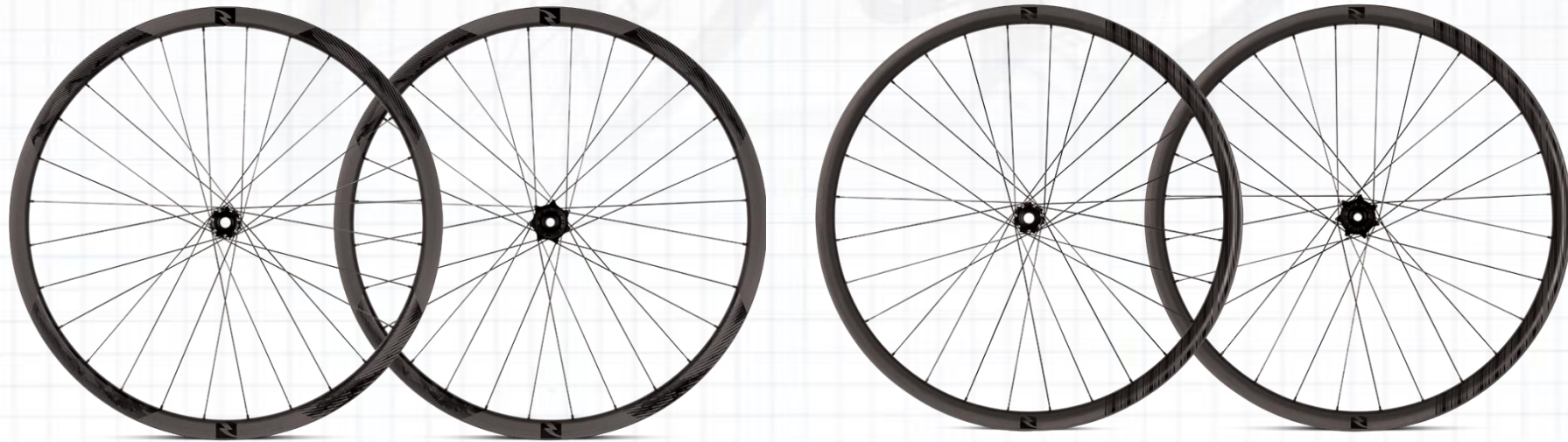


PART NO.	HUB COMPONENTS AND ACCESSORIES	QTY
21844	FREEHUB, i9 SHIM 10SP COMPLETE	
21845	FREEHUB, i9 XD 11SP COMPLETE	

* Optional add-on

WARNING: The information contained herein is proprietary and confidential to Reynolds Cycling and Reynolds Cycling affiliates. This document is not intended for public distribution or disclosure. This document may be referenced and reproduced for and by Reynolds Cycling and Reynolds Cycling affiliates only.

2017 REYNOLDS BLACK LABEL CARBON 29ER MOUNTAIN WHEELS

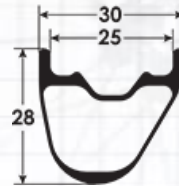


29 ENDURO ASYM

29 TRAIL ASYM

2017 BLACK LABEL 29 TRAIL TUBELESS CARBON MOUNTAIN

PART NO.	ITEM DESCRIPTION	QTY
77576	WS, 29ER TRAIL BL ASYM 28/28H	1
77578	W, 29ER TRAIL BL ASYM FRNT 28H	1
20311	NIPPLE,EXT BLACK ALLOY SQ HEAD	28
20920	RIM TAPE,TL 28MM 5.5M INSTALED	1
21602	SPOKE, SPM CX-RAY 300MM SP BLK	14
21603	SPOKE, SPM CX-RAY 301MM SP BLK	14
21826	HUB, MTN i9 SP CL 28H 100x15TA	1
66578	D RIM, H ₂ O 29ER TRAIL ASYM 28H	1
77579	W, 29ER TRAIL BL ASYM SHIM 28H	1
20311	NIPPLE,EXT BLACK ALLOY SQ HEAD	28
20920	RIM TAPE,TL 28MM 5.5M INSTALED	1
21602	SPOKE, SPM CX-RAY 300MM SP BLK	14
21603	SPOKE, SPM CX-RAY 301MM SP BLK	14
21828	HUB, MTN i9 SP CLSHIM28H142x12	1
66578	D RIM, H ₂ O 29ER TRAIL ASYM 28H	1
	W ACC KIT, MTN 27.5 & 29 ASYM	
20908	RIM TAPE, TUBELESS 28MM 11 M	1
20904	VALVE STEM, AM 45MM LONG	2
21287	LOCK RING, CENTER LOCK	2
21289	ADAPTER, CL TO IS6-BOLT	2



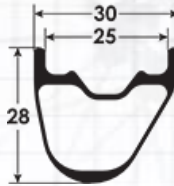
PART NO.	HUB COMPONENTS AND ACCESSORIES	QTY
21844	FREEHUB, i9 SHIM 10SP COMPLETE	
21845	FREEHUB, i9 XD 11SP COMPLETE	
21840	END CAP, i9 FRONT 15mm TA	
21841	END CAP, i9 REAR MTN 12mm TA	
21842	END CAP,i9 FRT QR CL	
21843	END CAP i9, REAR CL QR	
21848	AXLE, i9 MTN FRT CL 100mm HUB	
21849	AXLE, i9 MTN FRT CL 110mm HUB	
21850	AXLE, i9 MTN REAR CL12x142 HUB	
21851	AXLE, i9 MTN REAR CL12x148 HUB	
20165	BEARING, ENDURO 18307 ABEC 5	2
20166	BEARING, ENDURO 31803 ABEC 5	1
20167	BEARING, ENDURO 61803 ABEC 5	1
20168	BEARING, ENDURO 61903 ABEC 5	2



WARNING: The information contained herein is proprietary and confidential to Reynolds Cycling and Reynolds Cycling affiliates. This document is not intended for public distribution or disclosure. This document may be referenced and reproduced for and by Reynolds Cycling and Reynolds Cycling affiliates only.

2017 BLACK LABEL 29 TRAIL BST TUBELESS CARBON MOUNTAIN

PART NO.	ITEM DESCRIPTION	QTY
77581	WS, 29ER TRAIL BL ASYM BST 28/28H	1
77583	W, 29ER TRAIL BL ASYM BST FRNT 28H	1
20311	NIPPLE,EXT BLACK ALLOY SQ HEAD	28
20920	RIM TAPE,TL 28MM 5.5M INSTALED	1
21602	SPOKE, SPM CX-RAY 300MM SP BLK	14
21603	SPOKE, SPM CX-RAY 301MM SP BLK	14
21827	HUB, MTN i9 SP CL 28H 110x15TA	1
66578	D RIM, H ₂ O 29ER TRAIL ASYM 28H	1
77584	W, 29ER TRAIL BL ASYM BST SHIM 28H	1
20311	NIPPLE,EXT BLACK ALLOY SQ HEAD	28
20920	RIM TAPE,TL 28MM 5.5M INSTALED	1
21602	SPOKE, SPM CX-RAY 300MM SP BLK	14
21603	SPOKE, SPM CX-RAY 301MM SP BLK	14
21829	HUB, MTN i9 SP CLSHIM28H148x12	1
66578	D RIM, H ₂ O 29ER TRAIL ASYM 28H	1
	W ACC KIT, MTN 27.5 & 29 ASYM	
20908	RIM TAPE, TUBELESS 28MM 11 M	1
20904	VALVE STEM, AM 45MM LONG	2
21287	LOCK RING, CENTER LOCK	2
21289	ADAPTER, CL TO IS6-BOLT	2



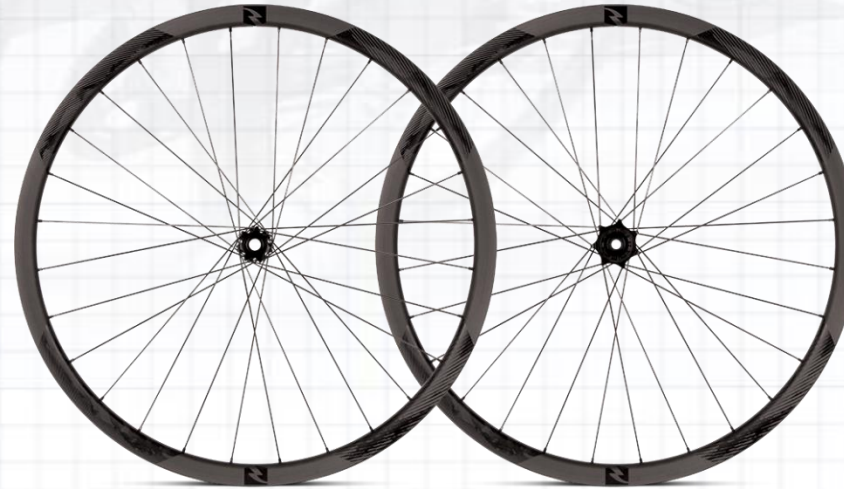
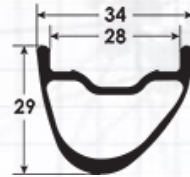
PART NO.	HUB COMPONENTS AND ACCESSORIES	QTY
21844	FREEHUB, i9 SHIM 10SP COMPLETE	
21845	FREEHUB, i9 XD 11SP COMPLETE	
21840	END CAP, i9 FRONT 15mm TA	
21841	END CAP, i9 REAR MTN 12mm TA	
21842	END CAP,i9 FRT QR CL	
21843	END CAP i9, REAR CL QR	
21848	AXLE, i9 MTN FRT CL 100mm HUB	
21849	AXLE, i9 MTN FRT CL 110mm HUB	
21850	AXLE, i9 MTN REAR CL12x142 HUB	
21851	AXLE, i9 MTN REAR CL12x148 HUB	
20165	BEARING, ENDURO 18307 ABEC 5	2
20166	BEARING, ENDURO 31803 ABEC 5	1
20167	BEARING, ENDURO 61803 ABEC 5	1
20168	BEARING, ENDURO 61903 ABEC 5	2



WARNING: The information contained herein is proprietary and confidential to Reynolds Cycling and Reynolds Cycling affiliates. This document is not intended for public distribution or disclosure. This document may be referenced and reproduced for and by Reynolds Cycling and Reynolds Cycling affiliates only.

2017 BLACK LABEL 29 ENDURO TUBELESS CARBON MOUNTAIN

PART NO.	ITEM DESCRIPTION	QTY
77591	WS, 29ER END ASYM 28/28H	1
77593	W, 29ER END ASYM FRNT 28H	1
20311	NIPPLE,EXT BLACK ALLOY SQ HEAD	28
21602	SPOKE, SPM CX-RAY 300MM SP BLK	14
21604	SPOKE, SPM CX-RAY 302MM SP BLK	14
21826	HUB, MTN i9 SP CL 28H 100x15TA	1
66593	D RIM, H ₂ O 29ER END ASYM 28H	1
77594	W, 29ER END ASYM REAR 28H	1
20311	NIPPLE,EXT BLACK ALLOY SQ HEAD	28
21601	SPOKE, SPM CX-RAY 299MM SP BLK	14
21603	SPOKE, SPM CX-RAY 301MM SP BLK	14
21828	HUB, MTN i9 SP CLSHIM28H 142x12	1
66593	D RIM, H ₂ O 29ER END ASYM 28H	1
	W ACC KIT, MTN 27.5 & 29 ASYM	
20904	VALVE STEM, AM 45MM LONG	2
20908	RIM TAPE, TUBELESS 28MM 11 M	1
21287	LOCK RING, CENTER LOCK	2
21289	ADAPTER, CL TO IS6-BOLT	2



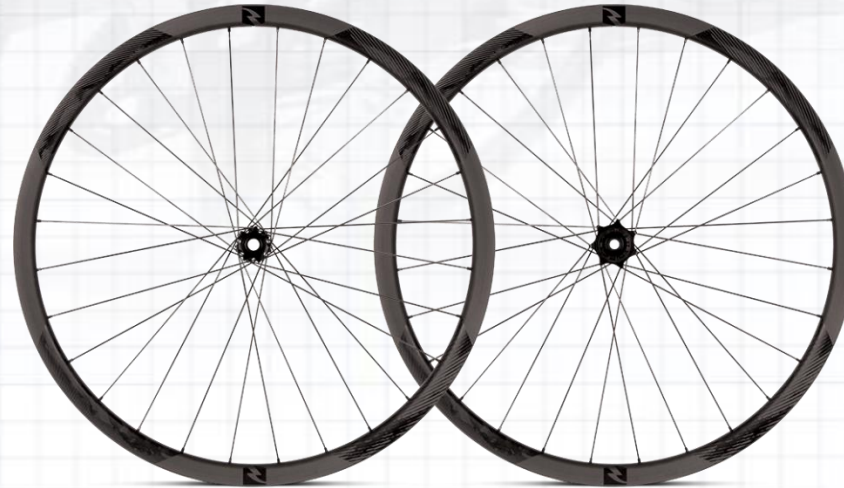
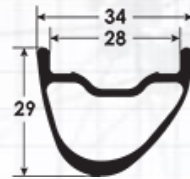
PART NO.	HUB COMPONENTS AND ACCESSORIES	QTY
21844	FREEHUB, i9 SHIM 10SP COMPLETE	
21845	FREEHUB, i9 XD 11SP COMPLETE	
21840	END CAP, i9 FRONT 15mm TA	
21841	END CAP, i9 REAR MTN 12mm TA	
21842	END CAP,i9 FRT QR CL	
21843	END CAP i9, REAR CL QR	
21848	AXLE, i9 MTN FRT CL 100mm HUB	
21849	AXLE, i9 MTN FRT CL 110mm HUB	
21850	AXLE, i9 MTN REAR CL12x142 HUB	
21851	AXLE, i9 MTN REAR CL12x148 HUB	
20165	BEARING, ENDURO 18307 ABEC 5	2
20166	BEARING, ENDURO 31803 ABEC 5	1
20167	BEARING, ENDURO 61803 ABEC 5	1
20168	BEARING, ENDURO 61903 ABEC 5	2



WARNING: The information contained herein is proprietary and confidential to Reynolds Cycling and Reynolds Cycling affiliates. This document is not intended for public distribution or disclosure. This document may be referenced and reproduced for and by Reynolds Cycling and Reynolds Cycling affiliates only.

2017 BLACK LABEL 29 ENDURO BST TUBELESS CARBON MOUNTAIN

PART NO.	ITEM DESCRIPTION	QTY
77596	WS, 29ER END ASYM BST 28/28H	1
77598	W, 29ER END ASYM BST FRNT 28H	1
20311	NIPPLE,EXT BLACK ALLOY SQ HEAD	28
21602	SPOKE, SPM CX-RAY 300MM SP BLK	14
21604	SPOKE, SPM CX-RAY 302MM SP BLK	14
21827	HUB, MTN i9 SP CL 28H 110x15TA	1
66593	D RIM, H ₂ O 29ER END ASYM 28H	1
77599	W, 29ER END ASYM BST REAR 28H	1
20311	NIPPLE,EXT BLACK ALLOY SQ HEAD	28
21601	SPOKE, SPM CX-RAY 299MM SP BLK	14
21603	SPOKE, SPM CX-RAY 301MM SP BLK	14
21829	HUB, MTN i9 SP CLSHIM28H 148x12	1
66593	D RIM, H ₂ O 29ER END ASYM 28H	1
	W ACC KIT, MTN 27.5 & 29 ASYM	
20904	VALVE STEM, AM 45MM LONG	2
20908	RIM TAPE, TUBELESS 28MM 11 M	1
21287	LOCK RING, CENTER LOCK	2
21289	ADAPTER, CL TO IS6-BOLT	2

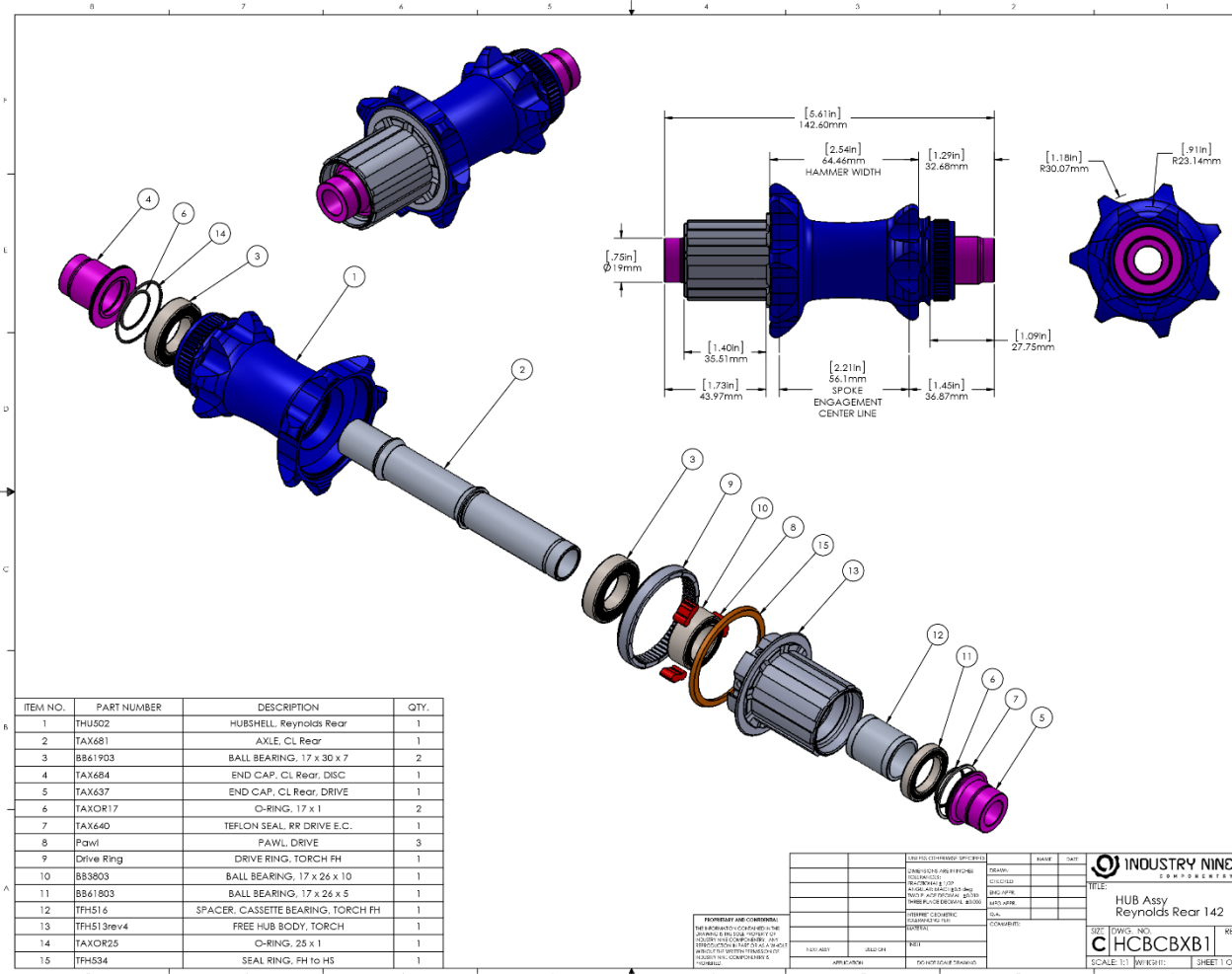


PART NO.	HUB COMPONENTS AND ACCESSORIES	QTY
21844	FREEHUB, i9 SHIM 10SP COMPLETE	
21845	FREEHUB, i9 XD 11SP COMPLETE	
21840	END CAP, i9 FRONT 15mm TA	
21841	END CAP, i9 REAR MTN 12mm TA	
21842	END CAP, i9 FRT QR CL	
21843	END CAP i9, REAR CL QR	
21848	AXLE, i9 MTN FRT CL 100mm HUB	
21849	AXLE, i9 MTN FRT CL 110mm HUB	
21850	AXLE, i9 MTN REAR CL12x142 HUB	
21851	AXLE, i9 MTN REAR CL12x148 HUB	
20165	BEARING, ENDURO 18307 ABEC 5	2
20166	BEARING, ENDURO 31803 ABEC 5	1
20167	BEARING, ENDURO 61803 ABEC 5	1
20168	BEARING, ENDURO 61903 ABEC 5	2

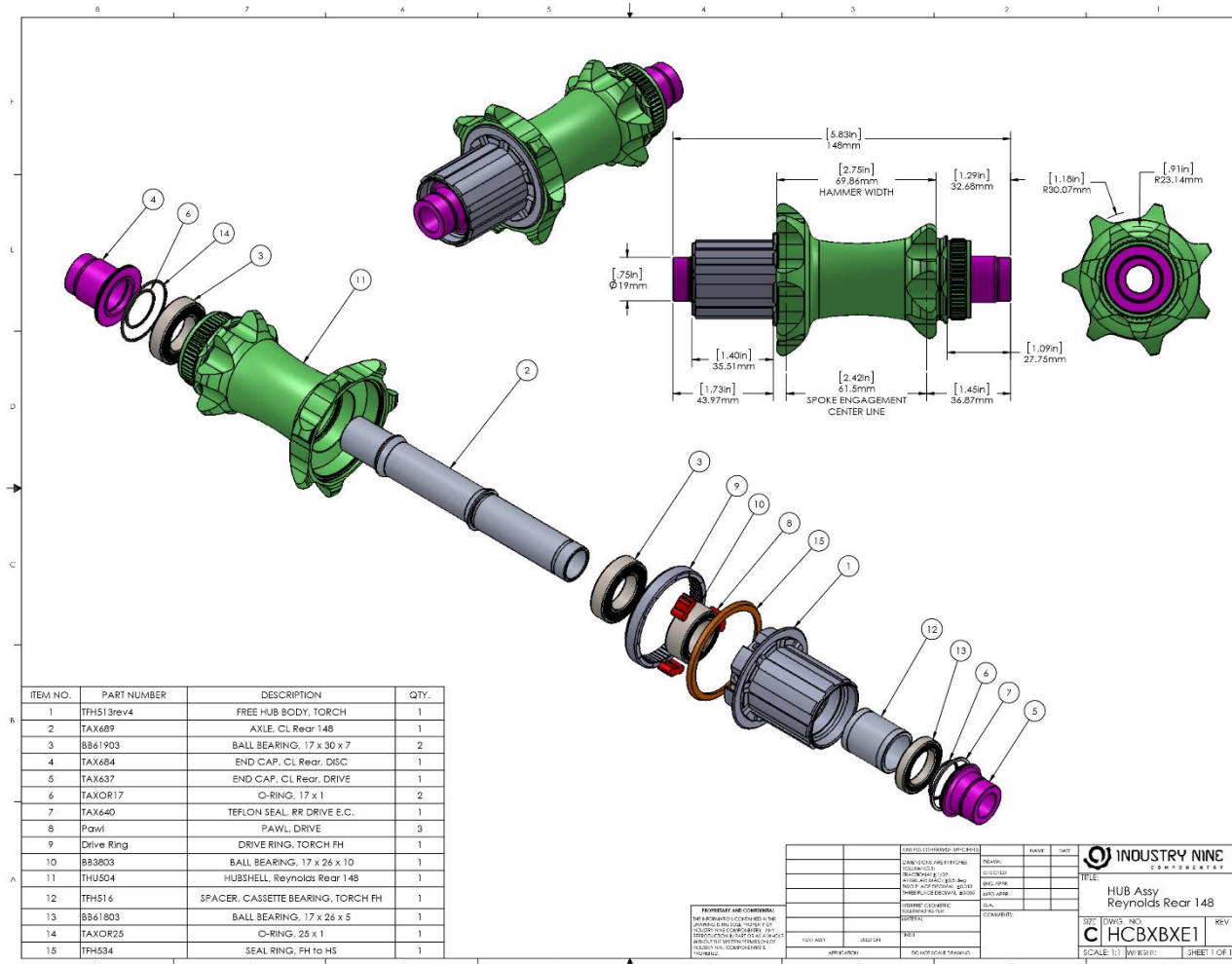


WARNING: The information contained herein is proprietary and confidential to Reynolds Cycling and Reynolds Cycling affiliates. This document is not intended for public distribution or disclosure. This document may be referenced and reproduced for and by Reynolds Cycling and Reynolds Cycling affiliates only.

2017 BLACK LABEL MTN CARBON DISC REAR HUB



2017 BOOST BLACK LABEL MTN CARBON DISC REAR HUB



WARNING: The information contained herein is proprietary and confidential to Reynolds Cycling and Reynolds Cycling affiliates. This document is not intended for public distribution or disclosure. This document may be referenced and reproduced for and by Reynolds Cycling and Reynolds Cycling affiliates only.