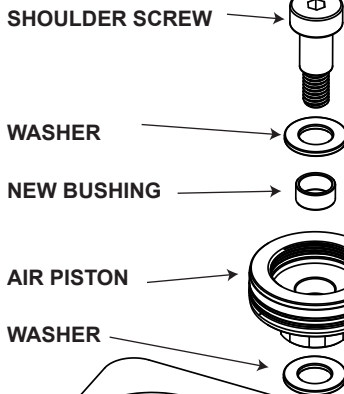
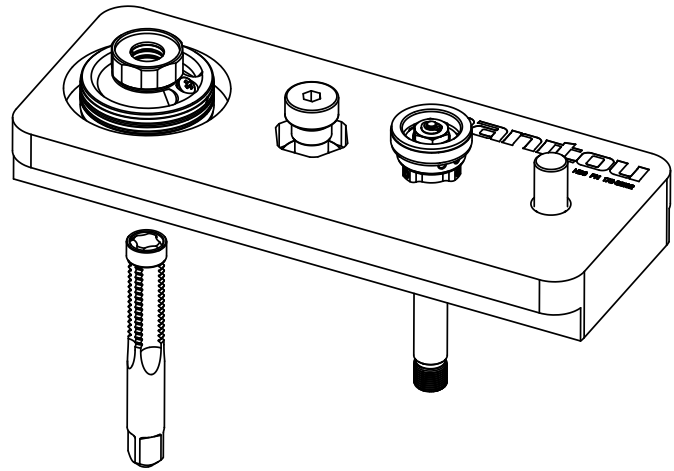
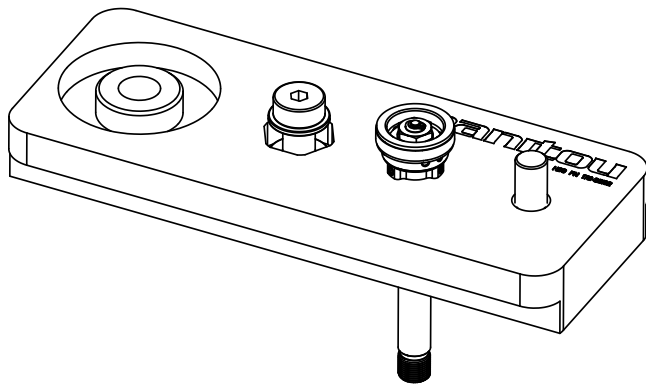
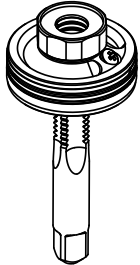


AIR PISTON SERVICE TOOL

The first pocket of the service tool is used for removing the shaft bushing in the air piston.

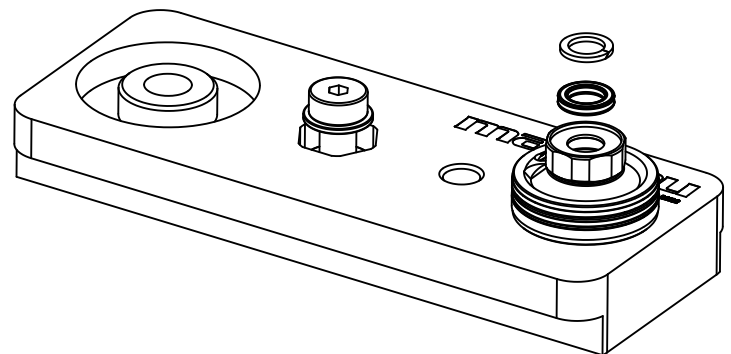
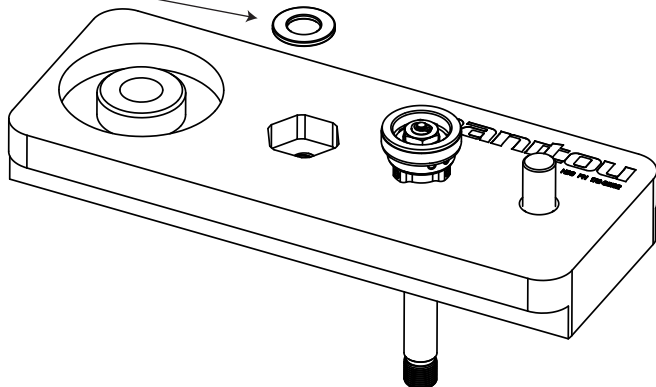
1. Thread a 7/16-14 UNC closed-end hole tap into the bushing ensuring that the tap is only installed into the bushing and not into the piston body.
2. Drop the piston with the tap installed into the first pocket on the plate so the piston nests on the plate. Use a light hammer and punch to tap the bushing out from the top. Clean metal shavings from tool before using the other functions.



The second section of the service tool is used to press in the new shaft bushing into the air piston. Place parts in the second pocket on the plate in the order shown and tighten the shoulder screw until the bushing is fully installed into the piston.

The third pocket on the service tool can be used to hold the shaft assembly.

The peg on the end acts as a stop for installing the seals in the piston ID.



For further instructions on service tool usage watch the McLeod Service videos at:
www.manitoumtb.com/support/